

THE STEVENS & PERMANENTE CREEKS WATERSHED COUNCIL

Our MISSION STATEMENT reads:

The SPCWC mission is to engage the community in wise stewardship of our watershed, furthering the protection, restoration, and community appreciation of creeks and associated habitats.

This shall be accomplished through collaboration and consensus in a manner sensitive to the entire community.

Our council was founded in August 2003. We are community residents, city representatives, agency officials, scientists, environmental advocates, and others interested in the watershed. Everyone is strongly encouraged to attend and participate! The Watershed Council provides an important forum for discussion and resolution of watershed problems.

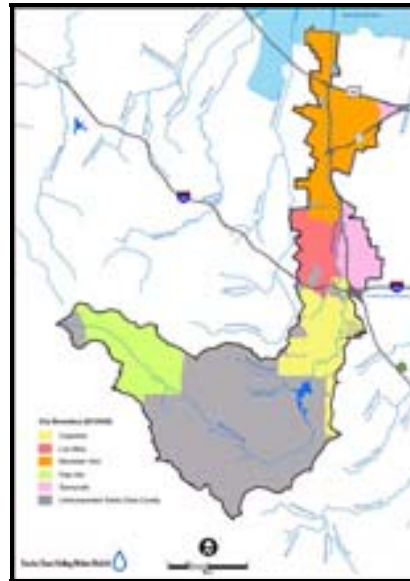


A Common Merganser on lower Stevens Creek

The watershed we strive to protect includes all of the land that drains into Stevens and Permanente Creeks and their tributaries, along with the land and water inhabitants.

WHY STEVENS & PERMANENTE CREEKS?

These creeks are natural treasures flowing through forested, relatively wild areas of Palo Alto and Santa Clara County and into residential and busy metropolitan areas of Cupertino, Los Altos, Sunnyvale and Mountain View into San Francisco Bay. These creeks' corridors contain much healthy "riparian" habitat that supports wildlife including threatened Steelhead Trout that migrate up Stevens creek to spawn.



from Santa Clara Valley Water District's Watershed Stewardship Planning Project

Historically, Permanente flowed into Stevens Creek near the Bay. Years ago, the creek was modified to enter the Bay west of Stevens Creek. However, about half way between El Camino and Highway 280, a concrete channel now diverts most of Permanente's flow into Stevens Creek to protect the lower watershed from flooding.

PROGRAM GOALS

A primary goal of the Council is to increase community awareness and involvement in protecting and preserving healthy local watershed habitat.



Volunteer Streamkeepers make observations of the creek

Currently this goal is being met through a volunteer monitoring and outreach program that gets community members involved in being active stewards of the creeks.



Volunteer monitors analyze water quality

The results of this monitoring help us to plan and prioritize projects to improve habitat condition. Funds are being sought to carry out projects such as public outreach, removal of fish barriers, and replacement of invasive weeds with native plants.

ONGOING PROJECTS AND VOLUNTEER OPPORTUNITIES

Our most valuable asset is our volunteers that enthusiastically implement our programs. New volunteers are always welcome and are provided with training.

Streamkeeper Program

Volunteers walk a short section of the stream observing conditions and reporting observations.

Water Quality Monitoring Program

Volunteers measure and report dissolved oxygen, turbidity, temperature, conductivity, and pH.

Invasive Weed Mapping

Volunteers locate and map using G.P.S., ten different invasive weeds that threaten native plants important for wildlife habitat.



Volunteer Weed Mappers take a GPS reading

Bioassessment Study

Volunteers collect and identify stream insects and other “macroinvertebrates.” The number and type of these stream dwellers give us a picture of stream health.

THREATENED FISH IN OUR WATERSHED

Each year, during the winter months, adult steelhead return from the Pacific Ocean through the San Francisco Bay into Stevens Creek to spawn. The adults build nests (redds) in the streambed gravels where they lay their eggs. From February through May it is important not to walk in the stream when you might disturb the eggs or fry. The Santa Clara Valley Water District releases water from the reservoir to maintain a “cold water zone” to support juvenile steelhead throughout the summer months when portions of the creek may dry up. In the spring of the following year, Steelhead smolts of sufficient size then migrate to the ocean thus completing their life cycle.

HOW TO GET INVOLVED

Come to a meeting: Stevens & Permanente Creeks Watershed Council meets every other month. Also, consider attending City Council and Planning Commission meetings on topics that affect the watershed.

Volunteer: See the list of opportunities in this brochure. Other opportunities include helping with creek cleanup and outreach events.

More information: Visit our website for event information, including our meeting schedule, agenda and minutes: www.spcwc.org or contact our Executive Director, Mondy Lariz at (408) 356-8258 or email ed@spcwc.org

Please consider supporting our projects by becoming a member and making a tax-deductible donation to:

Acterra c/o SPCWC
2353 Venndale Ave.
San Jose, CA 95124

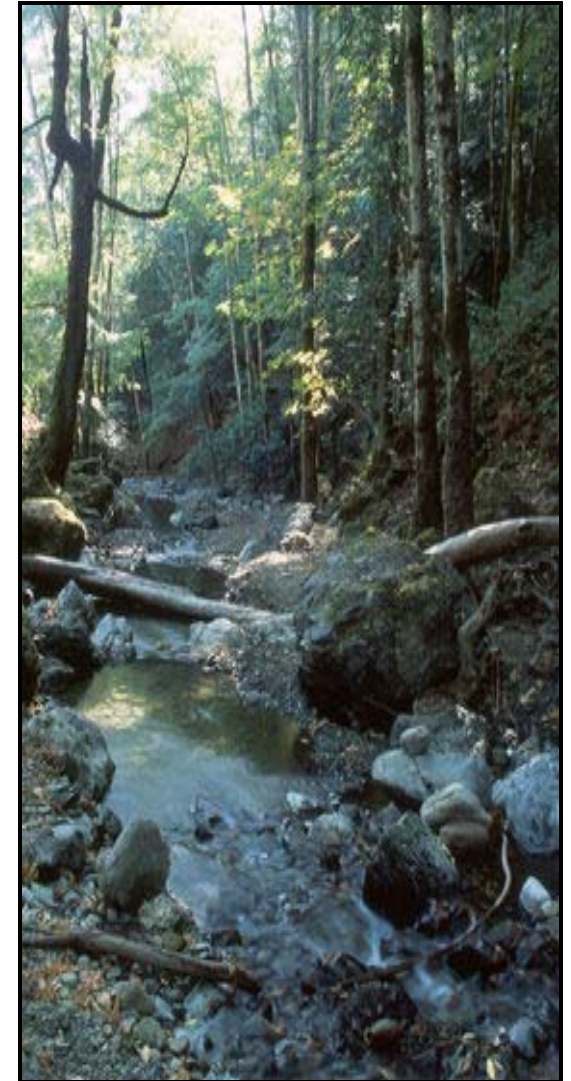


Photo provided by Phillip and Kristina Robertson

STEVENS & PERMANENTE CREEKS WATERSHED COUNCIL

a project of Acterra

www.spcwc.org